

Bolt Connected Round Cartridge Type Fast-acting Fuse Links For Semiconductor protection



► Applications

This series of fuses are mainly used in circuits of AC 50Hz, rated voltage of 1500V and rated current of 1000A, to protect the semiconductor components and the whole unit from short-circuit.

The breaking capacity of the fuses is up to 100KA.

The fuses are compliant with the IEC269-1/IEC269-4 and GB13539.1/GB13539.4 .

► Design Features

The variable cross-section fuse element made of pure silver sheets are sealed in the melting tube made of epoxy glass fibre which is heat resistant. The fuse tube is filled with chemically-treated high-purity quartz as arc-extinguishing medium. The two ends of the melting body are connected to the (knife) contacts by dot welding.

► Basic Data

The models, dimensions, ratings are shown in Figures 6.1~6.6 and Tables 6 .

Table 6

Cat. No.	Models	Rated voltage (V)	Rated current (A)	Dimensions/sizes (mm)							Weight (g)	
				Fig.	A	B	C	φD	E	F		φd
0601	RS94A	250	40~200	6.1	70	52	32	28	22	5	8.2×12	98
0602	RS94C	250	40~200	6.1	80	62	42	28	22	5	8.2×12	106
0603	RS94D	250	30~200	6.1	80	57	26	29	22	5	8.2×12	120
0604	RS94E	250	30~200	6.1	80	60	41	31	24	5	8.2×12	142
0605	RS94F	250	40~200	6.1	80	58	38	33	25	5	8.2×12	135
0606	RS94G	250	40~250	6.1	88	62	42	36	26	5	10.2×15	202.5
0607	RS94H	250	30~150	6.1	70	53	27	22	16	5	8.2×12	82
0608	RS94J	250	40~160	6.1	67	51	26	26	19	3.5	8.2×12	102
0609	RS95A	500/660	50~200	6.1	91	72	54	28	22	5	8.2×12	112.5
0610	RS95B	500/660	50~200	6.1	92	73	54	31	25	5	8.2×12	150
0611	RS95C	500/660	50~100	6.1	92	73	54	26	19	5	8.2×12	114
0612	RS95D	500	100~200	6.1	92	72	45	30	25	5	8.2×12	149
0613	RS95E	500/660	40~200	6.1	92	72	54	31	25	6	8.2×12	155
0614	RS95F	500/660	50~160	6.1	93	75	54	26	19	5	8.2×12	145
0615	RS95FS	500	100	6.1	100	82	48	26	19	3	8.2×12	124
0616	RS95G	500/660	50~200	6.1	93	75	53	31	25	5	8.2×10	128
0617	RS95H	250	200~250	6.1	96	70	42	36	26	5	10.2×15	193
0618	RS95K	250	250~400	6.1	98	70	38	47	32	5	10.2×15	320
0619	RS95L	700	100~200	6.1	127	108	89	31	25	5	8.2×12	195
0620	RS95M	500	50~200	6.1	110	81	50	31	25	5	8.2×10	165
0621	RS95N	700	50~160	6.1	128	101	75	25	20	6	10.5×15	172
0622	RS95P	250	250~315	6.1	98	68	41	38	25	6	10.5×18	218
0623	RS95Q	500	50~160	6.1	110	95	75	25	18	5	6.2×10	148
0624	RS95R	700	35~100	6.1	110	84	50	31	25	6	8.2×18	160
0625	RS95S	250	160~250	6.1	100	65	30	36	30	6	10.5×15	188
0626	RS95T	500/660	100~200	6.1	112	87	52	27	21	5	10×18	210
0627	RS95U	500	100	6.1	100	82	48	26	19	5	8.2×12	148
0628	RS95V	600	100~160	6.1	128	98	60	25	19	3	10.2×15	262
0629	RS95W	500	40~200	6.1	129	96	53	34	24	6	12×20	183
0630	RS96A	250	200~300	6.1	100	70	40	40	26	6	10.5×18	230
0631	RS96B	500/660	200~315	6.1	110	83	53	38	26	6	10.5×18	240.5
0632	RS96C	500/660	100~160	6.1	112	92	72	25	20	6	10.5×15	125
0633	RS96D	500/660	75~200	6.1	112	90	60	36	26	5	10.5×15	241
0634	RS96E	500/660	200	6.1	112	93	73	31	25	5	7×9.5	166
0635	RS96F	500/660	200~400	6.1	113	87	70	40	26	6	10.5×15	255
0636	RS96G	500/660	400~500	6.1	114	87	56	51	38	6	10.5×15	437
0637	RS96GK	250	400~500	6.1	97	67	38	51	36	8	11×17	198
0638	RS96H	500/660	200	6.1	117	92	67	28	22	3	7×9.5	132
0639	RS96K	500/660	200~400	6.1	117	80	52	40	32	6	10.5×15	280
0640	RS96L	500/660	200~315	6.1	117	89	57	37	30	6	10.5×15	280
0641	RS96M	500	50~200	6.1	135	113	67	34	20	5	8.2×12	196
0642	RS96N	500	250~315	6.1	115	87	58	39	26	6	10.5×18	245
0643	RS96P	700	125~200	6.1	130	90	50	38	25	6.3	10.5×26	250
0644	RS96Q	250	315~400	6.1	100	71	38	43	35	9	10.5×15	195
0645	RS96R	500/660	35~300	6.1	113	83	53	40	30	6.5	12.2×18	197
0646	RS96S	250	40~200	6.1	95	68	40	27	20	5	9×18	153
0647	RS97A	500/660	300~500	6.1	120	90	58	46	32	6	10.5×18	450
0648	RS97B	500/660	50~200	6.1	126	100	74	38	26	6	10.5×18	295
0649	RS97C	500/700	350~500	6.1	128	98	70	51	38	6	10.5×18	460
0650	RS97D	500/700	200~315	6.1	130	98	72	38	26	6	10.5×18	288
0651	RS97E	500/660	200~315	6.1	145	111	77	38	29	5	7×11	300
0652	RS97F	500/660	200~400	6.1	145	105	76	41	28	8	10.5×18	355
0653	RS97G	500/660	200~400	6.1	146	110	76	41	29	5	7×9.5	341
0654	RS97H	500/660	200~400	6.1	146	110	75	48	36	8	12.5×18	520
0655	RS97K	500/660	200~400	6.1	130	100	70	53	42	8	14.2×18	480
0656	RS97L	500	200~400	6.1	125	103	48	51	38	6	10.5×18	420
0657	RS97M	500	400~500	6.1	145	102	53	51	38	6.3	14.5×30	465
0658	RS97N	500/660	200~315	6.1	145	113	88	38	25	6.3	10.5×18	353

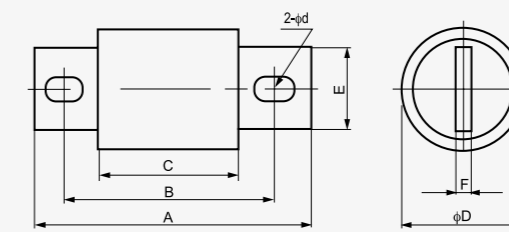


Figure 6.1